



PALENCIA



COMMUNITY COMPASS

Discover Palencia ~ Your Map to Community Living and Exploration



December 2024 Edition



AMENITY HOURS

[Click Here for the Palencia Online Calendar](#)



MC Amenity Center and Pools

Pools

Sunday through Saturday

9:00 AM - 8:00 PM

Slide

Closed for the Winter Season

Center

9:00 AM - 8:00 PM

Palencia Tennis

Courts available

7:00am - 10:00 PM daily

Tennis Shop Hours of Operation

Monday-Friday 8:00 AM - 7:00 PM

Saturday & Sunday 8:00 AM - 4:00 PM



Sweetwater Swim & Fitness Center

[CLICK HERE for Current Hours and Information](#)

AMENITY HOURS

Christmas/ New Years Week



MC Amenity Center and Pools

Tuesday 12/24 & 12/31:
9AM- 12PM

Wednesday 12/25 & 1/1:
Closed

Thursday 12/26 & 1/2:
Normal Operations

Palencia Tennis

Courts:

-Tuesday:

12/24 & 12/31:

Normal Operations

-Wednesday:

12/25 & 12/31:

First come first serve/ No
lights for evening play

-Thursday:

12/26 & 1/2:

Normal Operations

Office:

-Tuesday:

12/24 & 12/31:

8:00AM-12:00PM

-Wednesday:

12/25 & 1/1:

Closed

-Thursday:

12/26 & 1/2:

Normal Operations



Sweetwater

Swim & Fitness Center

Tuesday 12/24:

5AM-1PM

Tuesday 12/31:

5AM-3PM

Wednesday 12/25:

Closed

Wednesday 1/1:

8AM- 8PM

Thursday 12/26:

Normal Operations

Thursday 1/2:

Normal Operations

FRIDAY, DEC 6TH!!!

CLICK THE FLYER FOR
MORE INFO

WINTER

festival

Market Street



6TH
DECEMBER

5:00-8:00

~Tree Lighting~
~Santa~Snow~Carriage Rides~
~Caricatures~Kids Zone~
~Food Trucks~
~DJ~Vendor Market~

BRING THOSE LETTERS FOR SANTA!!!

LETTERS TO



Santa



BEGINS 11/23 | ENDS 12/14

MAILBOX LOCATIONS:

~AMENITY CENTER~TENNIS CENTER~FITNESS CENTER

Drop off your letters in our Santa Mailboxes and receive a special letter back before Christmas! Be sure to add your child's name and address to the envelope.



If you do not receive a response within 2 weeks, please contact palenciaadmin@marshallcreekcdd.com

LIGHT UP PALENCIA!!!

CLICK THE FLYER TO REGISTER
YOUR ADDRESS NOW!

The flyer features a festive background with a green-to-blue gradient, bokeh light effects, and strings of colorful Christmas lights. The title 'Light Up Palencia' is prominently displayed in a white serif font, with 'Up' in a smaller size and a decorative yellow flourish underneath. Below the title, the subtitle 'Holiday Light Contest' is written in a cursive font. The main text provides details about the contest, including prize amounts and registration information. At the bottom, there are illustrations of a green and gold Christmas ornament and a gold train engine.

Light
Up
Palencia

Holiday Light Contest

Decorate your home this holiday season for a chance to win!

There will be 3 Categories, and a Best in Show.

1st Place: \$100 | 2nd Place: \$50

Best In Show: \$150

7 winners total!

Registrations are due by 12/15

Judging Parade will take place on 12/20

Categories include:

- ~Traditional
- ~Griswold
- ~Rockin'

For additional information please email Hila Stalcup at hila.stalcup@marshallcreekcdd.com

A FESTIVE WAY TO START
WINTER BREAK!!!

Palencia Presents
MARKET STREET

*Movie
Nights*



Friday, Dec 20th | Showtime 6:00PM



~All Aboard for the Polar Express!!!

~Bring your own picnic blankets and bug spray and enjoy the festivities on the lawn by the Amenity Center.

~Complimentary Popcorn & Cotton Candy from 5:30-6:30

~Food Truck from 5-8



TENNIS



DECEMBER NEWSLETTER

December Clinics:

Adults and Youth

Our clinics will be on a normal schedule from

Adults: Dec. 2nd-Dec. 20th

Drill Clinics and Friday Beg clinics will be held 12/27 and 1/3

Youth: Dec. 2nd-Dec. 19th

Regular clinics for youth and adults resume on January 6th

Holiday and Tournament Closures:

Courts will be partially closed on Saturday, December 21st due to a ~~mens~~ tennis round robin.

The Tennis Office will be closed
Noon on Dec. 24th through

Dec. 25th. Office will re-open Dec. 26th at 8:00 a.m.

Noon on Dec. 31st through

Jan. 1st. Office will re-open Jan. 2nd at 8:00 a.m.

Courts will be on a First Come/First Serve basis with no lights available during the closures.



Lost and Found is full! Please stop in if you are missing anything!



DECEMBER SALES on lesson packages, racquets (tennis & pickleball), ball machine, Palencia logo wear +more!



Youth Holiday Camps:

Two day holiday camp on Jan. 2nd and 3rd. Details to come!



The B Team wants to thank all of you for participating in the October Underwear Drive for Port in the Storm Youth Center. They collected 228 articles of underwear and the Center is very grateful to you all!



MENS SCURVY THE 13TH ROUND ROBIN

Saturday, Dec. 21st from 10:00 am to 12:00 pm

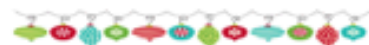
All levels of play!

\$50/pp

Sign up by contacting Chip Jeter at ejeter12@bellsouth.net

Space is limited to 32 players so sign up ASAP!

Always a fun event!



LADIES ONE DAY CLINICS:

Tennis Clinics on 12/23 and 12/30:

9:00 a.m. A and B teams

10:00 a.m. C and D teams

\$17/clinic

Call the Tennis Center to sign-up!



2ND Annual Ugly Sweater Day at the Tennis Center!

Monday, December 16th from 8:00 a.m. to 1:00 p.m.

Join us for some hot cocoa and yummy treats in celebration of the season!

Wear your ugliest holiday sweater and take some pick with your friends, teammates and coaches!



It's with a heavy heart that we announce the retirement of Coach Scott Lefteris from Palencia Tennis Center. After 9 years here and countless hours on the courts, he will be leaving mid-December. Please wish him luck when you see him!

Palencia Tennis Center
904-825-4012

palenciatennis@marshallcreekcodd.com
Tom Salmon-Director of Tennis
tom.salmon@marshallcreekcodd.com

Jeff Golden- Head Pro
jeff.golden@marshallcreekcodd.com

Jana McDonald-Tennis Pro
janatennispro@gmail.com
Myron Grunberg -Tennis Pro
Myron49@aol.com

TENNIS



It's SCURVY DOG TIME!

WHAT: Scurvy the Thirteenth – the 13th Annual Scurvy Dog Tennis Battle

WHEN: Saturday, December 21st, 2024 – 9:30 am arrival; 10:00 am start

WHERE: Palencia Tennis Center – 625B Palencia Club Drive, St. Augustine, FL 32095

WHO: Men Only! Any level can play - we will pair partners and opponents to make the most competitive matchups possible

ENTRY FEE: \$50.00 includes match balls and the highly prized dri-fit style Scurvy t-shirt

FORMAT: We will pair partners and opponents to make the most competitive matchups possible. We'll also have a **CALCUTTA** where you pick the match winners for the chance to win yellow lab chewed up tennis balls and other valuable prizes (see **APRES SCURVY** below).

DOUBLE DUTY: We will play 2 matches back-to-back.

- **First Match = Eight-Game Pro Set:** The first team or player to win eight games by a margin of two (i.e., 9-7) wins the pro set and the match. The set tiebreak (first to 7 points by 2) is in effect at eight games all.
- **Second Match = USTA Best of Two Tiebreak Sets; Third Set Super Tiebreak:** Regular scoring with ads but, should sets split, a match (super) tiebreak (first to 10 points by margin of 2) is in effect in lieu of playing a third set.

All participants will be placed into 4 team groups. Play your first match, then winners play winners and 2nd place teams play each other within the group. In the **CALCUTTA**, you'll want to pick the winners in each of the 4 team groups. No one knows all the players – winning is pure luck.

APRES SCURVY: after the battle, we'll gather at the **Donovan's Irish Pub** for grub and grog. While there, we'll reveal the winner of the cash prize of the **CALCUTTA**. **You must be present to collect!!!!!!**

This year the prize money will be distributed as follows:

- 1st Place: \$100 | 2nd Place: \$60 | 3rd Place \$40
- The big winner: the net proceeds will be donated to the Scleraderma Foundation!!!!!!

TO ENTER: reply ASAP via e-mail to ejeter12@bellsouth.net with:

- YOUR NAME and tennis rating (beginner, 3.0, 3.5, etc.)
- T Shirt Size: there's a time crunch on ordering shirts (thanks COVID!). If you let me know by **Friday, 12/6** I'll guarantee your shirt size. Otherwise, no promises. I'll order a mix and hope it works out.
- Pay on tournament day by cash or check. No credit cards or bitcoin will be accepted.

SPACE IS LIMITED to 32 players! – get in early.

Grace and peace to you...

Chip Jeter <>< Cell: 904.703.1555 | e-mail: ejeter12@bellsouth.net

TENNIS



PALENCIA TENNIS SHOP

HOLIDAY SALE

Sale runs December 1st through December 31st

SALE INCLUDES

25% OFF the following Merchandise:

Adult racquets (in stock)

Children's racquets

Pickleball racquets

Shoes (in stock)

Sunglasses

Clothing- Men's shirts, Women's shirts, hats, visors, socks

20% OFF the following services:

Package of 4 private lesson (limit 1 package per family)

Yearly Ball Machine Rental

Additional offer:

BUY 2 Friday Drill Clinics, Get the 3rd Free!

(limit 1 certificate per person)



Join us at the Tennis Center on
**Monday, December 16th from
8:00 am to 1:00 pm**, for some
hot cocoa and yummy treats in
celebration of the season!

Wear your ugliest holiday
sweater and take some pics
with your friends, teammates,
and coaches! Even if you're
not playing, stop by for some
fun!



FITNESS CENTER



Sweetwater Fitness December

| SUN | MON | TUE | WED | THU | FRI | SAT |
|--|----------------------|--|---|--|-------------------|-----------------------|
| 1 1 plank for 20 sec. | 2 2 Burpees | 3 3 push-ups | 4 4 star jumps | 5 5 squats Sweetwater CDD Meeting 4pm at Fitness Center | 6 6 chair dips | 7 7 boxing punches |
| 8 8 mountain Climbers | 9 9 Jumping Jacks | 10 10 Alternating Lungest | 11 11 Crunches Pickleball Social 6-10pm | 12 12 high knees | 13 | 14 |
| 15 | 16 | 17 | 18 | 19 | 20 | 21 |
| 22 | 23 | 24 5am-1pm  | 25 Closed  | 26. | 27 | |
| 29 | 30 | 31 5am-1pm  | 8am-8pm  |  | | |
|  | | | | | | |

FITNESS CENTER

12 DAYS OF CHRISTMAS WORKOUT ❄️

"On the first day of Christmas,
my trainer gave to me."

- 1 plank for 20 seconds
- 2 burpees
- 3 push-ups
- 4 star jumps
- 5 squats
- 6 chair dips
- 7 boxing punches
- 8 mountain climbers
- 9 jumping jacks
- 10 alternating lunges
- 11 crunches
- 12 high knees



Sweetwater

December ❄️

Fitness

Challenge ❄️



Sweetwater Fitness Holiday Hours:

Tuesday Dec 24th - 5am-7pm

Wednesday Dec 25th - Closed

New Years Hours:

Tuesday Dec 31st - 5am-3pm

Wednesday Jan 1st - 8am-8pm



Fitness Center Holiday Class Schedule

Tuesday 12/24 - yes, Cardio X Training

all other classes are cancelled

Wednesday 12/25 - No Classes

Tuesday 12/31 - yes, Cardio X Training

All other classes are cancelled

Wednesday 1/1 - yes Spin class, all other

classes are cancelled



PICKLEBALL COURTS

FITNESS CENTER

For Pickleball Clinic info: Please Call or Text
Darcy Miller :(904) 891-6573



December Pickleball Clinics

Hey Everyone!

I hope you are ready for a tremendous holiday season! As the year wraps up, I want to offer something to you all that will tie up all the work that you have put in on fundamentals! December will be exclusively for game analysis and strategy.

Here is how it will work. You will get a group of four and sign up for an hour with me. You will play games and I will help you become more strategic in your approach, as well as reinforce how the fundamentals will work in game situations. Every point will be an opportunity to learn something new or validate what you are doing! We can also identify areas for improvement in your game as well!

This will be **\$25** per person and will be one hour sessions. If you want to sign up for two hours you are more than welcome!

So get a group of four together and text me - (904) 891-6573 - which session you would like to be in!

Tuesday, Dec. 3
6:00-7:00
7:00-8:00

Saturday, Dec. 14
9:00-10:00
10:00-11:00

Saturday, Dec. 7
9:00-10:00
10:00-11:00

Tuesday, Dec. 17
6:00-7:00
7:00-8:00

Tuesday, Dec. 10
6:00-7:00
7:00-8:00

For Pickleball Clinic info Please Call or
text Darcy Miller at **904-891-6573**
to register
(Certified Pickleball Instructor)

AMENITY CENTER

Fitness Class Schedule

Les Mills BODYCOMBAT

Mondays at 9:00am with Heather S.

Les Mills BODYPUMP

Wednesdays & Fridays
at 10:00am with Crispin

CARDIO STEP

Wednesdays & Fridays
at 8:45am with Crispin

Les Mills BODYBALANCE

Saturdays at 10:00am with Steven R.

WATER AEROBICS

Classes will resume in Spring 2025

| Monday | Tuesday | Wednesday | Thursday | Friday | Saturday | Sunday |
|------------------------------------|---|--|--|-----------------------------------|-------------------------|--------|
| Fitness Classes | | | | | | |
| | | 8:45am Cardio Step | | 8:45am Cardio Step | | |
| 9:00am Body Combat | | | | | | |
| | | 10:00am Body Pump | | 10:00am Body Pump | 10:00am Body Balance | |
| Dance/Cheer | | | | | | |
| 4:15-5pm 6-10 yr old Lyrical | 4:15-5pm 3 yr old Ballet/Tumb | 4:15-5pm 4 yr old Ballet/Tumb | 4:30-5:15pm 2 yr old Ballet/Tumb | 4:30-5:15pm 5+ yr old Cheer | | |
| | 5-6:15pm 10-12 yr old Ballet/Jazz | 5-5:45pm 5-6 yr old Ballet/Jazz/Tumb | | | | |



DECEMBER

AMENITY CENTER CLASSES



EVENTS AND ACTIVITIES



Chick-Fil-A

Second Tuesday of the Month

December 10th

5:00 PM - 7:30 PM or until sell out

Carrabba's Take Out

Fourth Tuesday of the Month

December 31st

Pre-order Online

Pick-up at the Amenity Center

between 5-6pm



COMMUNITY CLUBS

[Click Here for the Palencia Online Calendar](#)



Palencia Game Club
Monday's (Starting 10/14)
11am



Mah Jongg
Monday's at 1pm
Fridays at 10am



Men's Bible Study
Monday's (Except last Monday)
7pm



Canasta & Bridge Card Club
Tuesday's
10am



Bunco Club
Fourth Tuesday
1:30pm



Palencia Ladies Book Club
Third Tuesday
4pm



Just Books Club
Third Wednesday
12pm



Farkle
Thursday's
12:30pm

INSPIRED SJC
CRAFT NIGHT

Inspired@palencia presents a new twist
on a holiday classic

Build-your-own
Snow Globe

Thurs, Dec 5th | 6-7:30pm

Palencia Amenity Center

Design your own light-up frosted glass
snowglobe to brighten the season!



\$25 per person
all supplies included
Sign up at
InspiredSJC@gmail.com



Globe measures appr. 3.5" x 5.5"

NEW ON MARKET STREET!!!



COSTAL COFFEE

**ON
MARKET
STREET!**

LOCATED IN THE
**GRAZE CRAZE SUITE
654**

\$2 OFF

COFFEE

NOW - 12/31/2024

www.mycostalcoffee.com/evergreen-cc-standar



ICED



HOT



SPECIALTY



OTHER DRINKS

NOV. HIGHLIGHTS

PALENCIA COMMUNITY CAR SHOW



New Feature

BREAKING NEWS

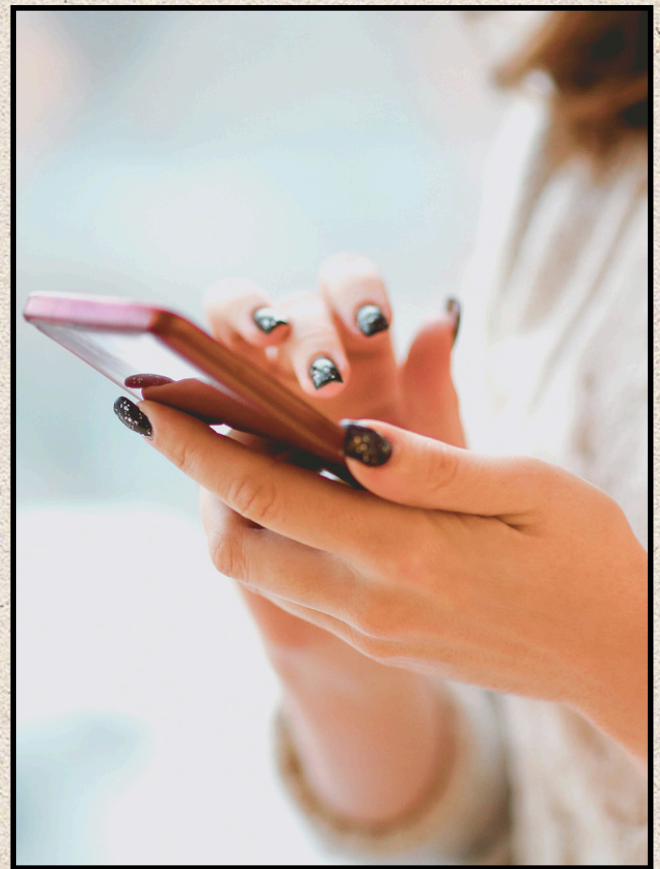
Introducing text/SMS message notifications for PalenciaOnline.

We're excited to announce a new way to stay connected with CDD news and updates! PalenciaOnline is introducing a text/SMS notification service to ensure you receive timely information straight to your mobile devices.

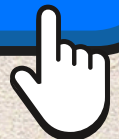
By subscribing to our text notifications, you'll get:

- Instant Alerts: Receive urgent updates and reminders directly.
- Community News: Stay informed about events, maintenance schedules, and more.
- Important Announcements: Meeting reminders, facility schedule information, etc.

To join, click here from your mobile phone or other device. Standard messaging rates apply.



[REGISTER HERE](#)



Your privacy is important to us. You can unsubscribe at any time by responding to any Palencia text with the word "Stop". We value your participation and look forward to keeping you informed through this convenient new communication tool.

Thank you for being part of our Palencia community!

PALENCIA

Onsite CDD Management Contacts

General Manager

Jodi Moore

jmoore@vestapropertyservices.com

Assistant General Manager

Denise Powers

dpowers@vestapropertyservices.com

Fitness Center Manager

Erin Gunia

egunia@rmsnf.com

Operations Manager

Dan Wright

dwright@rmsnf.com

Please call (904) 810-0520 for a new resident appointment.

CDD Information

Marshall Creek CDD Meeting

December 18th, 2024

4:00PM

At the Amenity Center

Sweetwater CDD Meeting

December 5th, 2024

4:00PM

At the Fitness Center

The meetings are open to the public and will be conducted in accordance with the provisions of Florida law for Community Development Districts.

There may be occasions when one or more Supervisors will participate by telephone. The meetings may be continued in progress to a time, date, and location stated on the record without additional publication of notice.

Any person requiring special accommodations at these meetings because of a disability or physical impairment should contact the District Office for your CDD. For Marshall Creek call (954) 603-0033, for Sweetwater call (904) 940-5850, at least 48 hours prior to the meeting. If you are hearing or speech impaired, please contact the Florida Relay Service at 7-1-1 for aid in contacting the District Office.

Each person who decides to appeal any action taken by the Board with respect to any matter considered at these meetings is advised that person will need to ensure that a verbatim record of the proceedings is made, including the testimony and evidence upon which such appeal is to be based.